

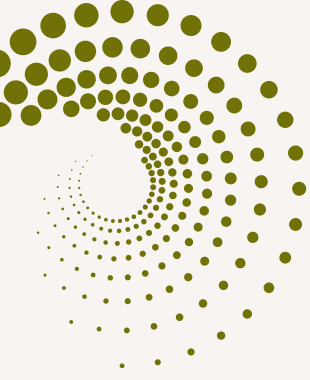


# AN ANCESTRAL JOURNEY

FREE MASTERCLASS: eBook

A PRACTICAL GUIDE FOR  
PEOPLE IN THE JOURNEY



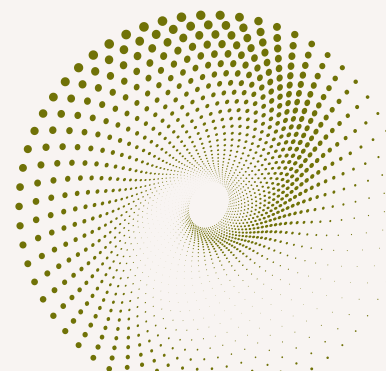


# AN ANCESTRAL JOURNEY



FREE MASTERCLASS : EBOOK

*A PRACTICAL GUIDE FOR  
PEOPLE IN THE JOURNEY*



# AN ANCESTRAL JOURNEY

free masterclass: ebook

by  
DR. Morongwa Makena

*The spiritual and practical  
guidance for those in the journey*

‘To know where you are going  
you must know where you come  
from’

# AN ANCESTRAL JOURNEY

## FREE MASTERCLASS

### Welcome!

Thank you for joining our Ancestral Journeys University online community. Please save this packet, as it will help you learn your way around as you go.

Our role is to support each member as well as the entire community in our individual and mutual process of ancestral awakening, and to keep our exchanges vibrant and aligned according to the God Consciousness template we work with. We encourage you to read and familiarize yourself with the tools provided to help you understand what an ancestral journey is.



**DR. MORONGWA MAKENA**  
Universal Healer

### AJ University

AJ University is a multifaceted community, that is bringing an energy field, and a body of work representing a new technology which is anchoring in this planet. It is not an easy experiment, as there are many challenges that we face every day, in bringing this new technology. One of our challenges has been creating a platform that is adequate for both spiritual and ancestral needs. Work on stabilizing our platform is ongoing.

### Our suggestions how to begin

The following is important information and steps to introduce you to the AJ University and provide you tools to utilize right away! Please read through it and see if it aligns with your soul to start embarking on your journey.

Please click here to go to our [AJ University](#) thread to get a quick start to our community environment.

We also offer a [Courses](#) for newcomers which we strongly recommend you use as a beginning guide in the journey. You must log in before you can access that page.

You may contact us directly at [veeseleka@icloud.com](mailto:veeseleka@icloud.com)



**Introduction**

**Who are we?**

**What is an ancestral journey?**

**Where do we come from?**

**Who are our ancestors?**

**Why are we on the journey?**

**12 Soul Missions**



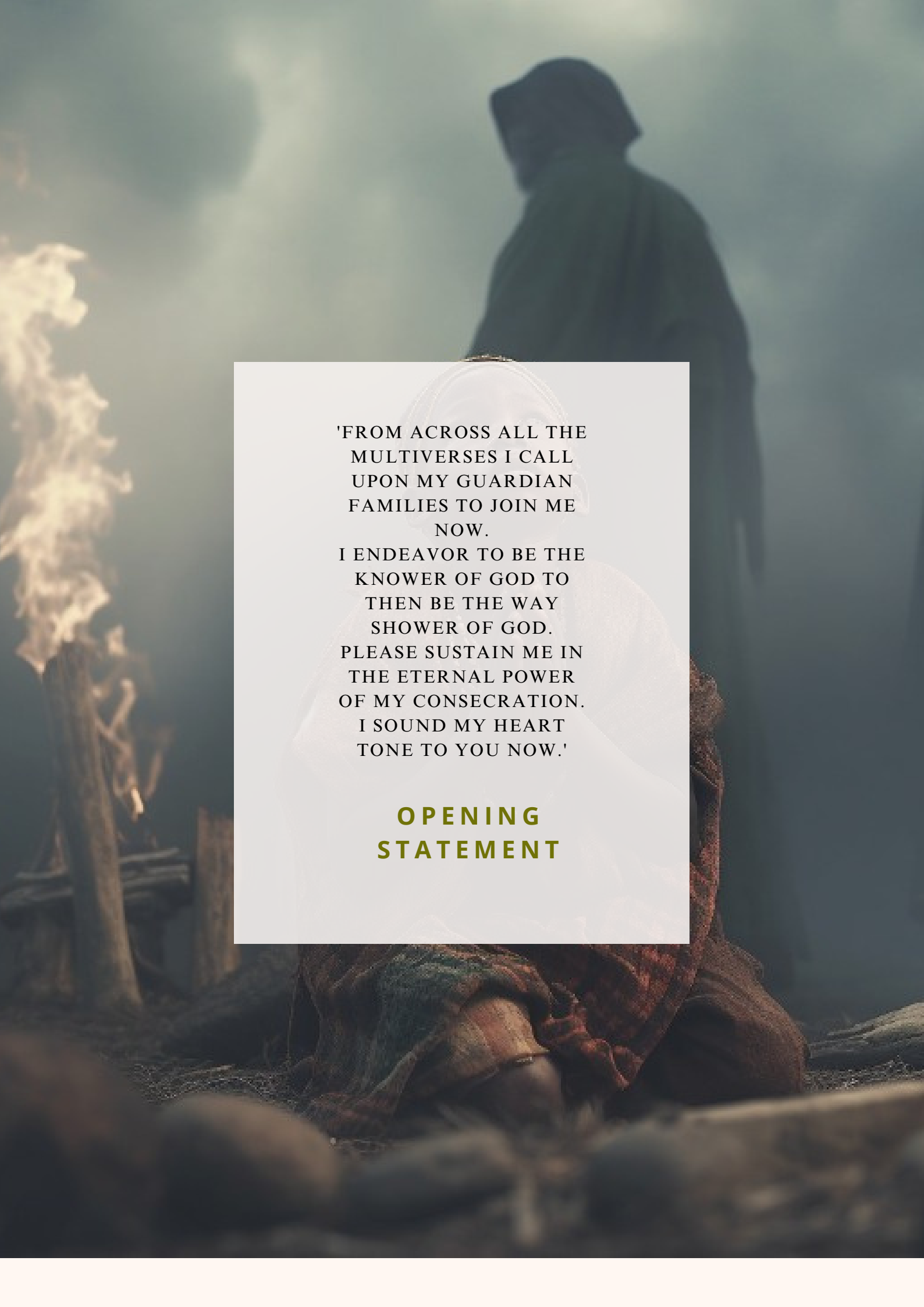
# INTRODUCTION

## **Ancestral Journeys University**

Ancestral Journeys Education is a multidimensional community, an energy field, and a body of work representing a new frequency set which we are anchoring in this planetary field, which acknowledges the value, interconnection and interdependence of all components of reality and the living God Spirit alive within all things. Our teachings are based upon advanced Ascension Sciences, ancient Light and Merkabah Mechanics of Amun-Ra Lineage. We are dedicated to providing teachings, services and community outreach programs for Spiritual Discovery, Consciousness Expansion, Life Empowerment and Holistic Healing. We offer personal and global healing perspectives focused upon expansion of consciousness and educated enlightenment, through which the ideals of venerate, admiration, love and co-creation. As such, you are able to ask questions such as, who am I, where do I come from and what is my purpose? These questions are asked at an intense stage whereby a soul has to first discover itself, on what is its purpose. It is easier, when looking from your tribal origin, as your identity, surname and lineage will gear you to who you are. Have you asked yourself on why are we supposed to be on the path, who chose us and why?

This masterclass is meant to help you understand this in a broader perspective, and help you find your true purpose.

Enjoy!



'FROM ACROSS ALL THE  
MULTIVERSES I CALL  
UPON MY GUARDIAN  
FAMILIES TO JOIN ME  
NOW.

I ENDEAVOR TO BE THE  
KNOWER OF GOD TO  
THEN BE THE WAY  
SHOWER OF GOD.  
PLEASE SUSTAIN ME IN  
THE ETERNAL POWER  
OF MY CONSECRATION.  
I SOUND MY HEART  
TONE TO YOU NOW.'

**OPENING  
STATEMENT**

# WHO ARE WE?

---

Ancient records state that it has been said that 560 million years ago, planet Tara with many light beings and metaterrestrial races combined their genetic and energetic imprint to create a master race of beings that would serve as Guardians of the planet Tara.

Then there was a race that evolved with 12 primary sub-racial divisions among them, and this race carried a genetic pattern taken from the 12 primary contributors to the master race, but all of them carried the unique 12 strand DNA the master race was designed to embody.

After evolving successfully, the race began to digress, their genetic code breaking down and their cultures falling into disharmony. Manipulation by inter breeding with various unrelated light beings stains was the primary cause of this digression.

Then the race divided into two primary racial stains, both races carried the original 12 strand DNA genetic code of their lineage, and both carried mutations and digressions of that code from inter-stellar breeding. Cultural disturbances escalated along with the continued digression of the two races.

This shows that the original human template contained genetic materials gathered throughout the galaxy, and the human template was not of Earth in its original construction. Humans originated on Earth's fifth-dimensional counterpart planet Tara. The biologies of these light beings emerged 560 million years ago from combining various species of animal-like life forms indigenous to Tara during those times with other, more advanced genetic strains from other planetary and other dimensional systems.

The human template was intended to become the custodian and guardian of Tara, and to enjoy open intergalactic and inter-dimensional exchange with many other civilizations. For a period of time this development occurred and the new species (humans) evolved graciously. There came a point in time however in which the species began a path of de-evolution. The humans began interbreeding with the other indigenous life forms.



# WHERE DO WE COME FROM?

---

## **Who are we?**

Several thousand years again passed during and the creators decided to experiment again, this time into Earth system and it will be done slowly. The genetic package was broken down into twelve units, each containing two primary attributes of the original pattern. The original pattern possessed twelve strands of DNA. The twelve were separated into individual packages and then polarized.

Each of the twelve sub-species was assigned on a genetic level to re-bundle their polarized strand into one complete unit. As each of the twelve groups of beings or tribes overcame the duality coded within its genetic structure, it would be brought into alignment with the tribes that had done the same. Through this process the human genetic strain would, over time, evolve into the wholeness of its original pattern.

The digressive elements that were mutated into the strain from its animal interbreeding would slowly be mutated out, leaving behind the pure code of the human template. It was and is a plan that would take several hundred-thousand years to complete, if the species were able to evolve rather than fall into de-evolution once more.

# WHAT IS AN ANCESTRAL JOURNEY?

## **AWAKENING**

It is the awakening of the multi-dimensional ancestral energy to remind you of who you are. This happens when kundalini energy awakens from the base of your spine going up to your crown, and this affects your nervous systems, that will create symptoms like migraine, backache, fatigue, negative emotions, sadness, painful joints, and many more. The awakening is meant to open your psychic abilities, healing power, spiritual and ancestral connection, and so forth, and this will depend on which dimension calls you first.

## **ALIGNMENT**

When these energies awakens, you will require alignment techniques, this will depend on a spiritual/traditional practice you are enrolled with, that will help you to align these dimensional energies in you. The tools and techniques used will be aligned with that particular spiritual practice.

## **EXPANSION**

The tools and techniques used will develop and grow your consciousness, in your gift, your being and your power. Your energetic state will change into a more higher power, and the growth is infinite and so is the journey.

# WHO ARE OUR ANCESTORS?

## 15 DIMENSIONAL STRUCTURE

### Cosmic

Stars, planets, galaxies, all celestial bodies and all inter-connected system that extends beyond our planet. We possess a genetic imprint of galaxies and stars from the universe.

### Elemental

Archetypes - gods & goddesses -e.g voodoo gods, if your ancestors were contracted with this system of gods, you will also have an awakening of such beings in your gift.

Earth element ancestors - its ancestors that govern your lineage and they will reveal themselves to you as well in your gift to show you that they are part of you.

- Earth - Gnomes - found in anthills (*abafana in S.A language*)
- Water - Mer people - mermaids and mermen (*nkosazana and nkosi*)
- Air - Sylphs - connected to storms (*nzunza*)
- Fire - Salamanders - connected to fire spirits /volcano (*zizwe zo mlilo*)

### Earth/Bloodline

It is the awakening of the multi-dimensional ancestral energy to remind you of who you are. This happens when kundalini energy awakens from the base of your spine going up to your crown, and this affects your nervous systems, that will create symptoms like migraine, backache, fatigue, negative emotions, sadness, painful joints, and many more. The awakening is meant to open your psychic abilities, healing power, spiritual and ancestral connection, and so forth, and this will depend on which dimension calls you first.

## ALIGNMENT

When these energies awakens, you will require alignment techniques, this will depend on a spiritual/traditional practice you are enrolled with, that will help you to align these dimensional energies in you. The tools and techniques used will be aligned with that particular spiritual practice.

## EXPANSION

The tools and techniques used will develop and grow your consciousness, in your gift, your being and your power. Your energetic state will change into a more higher power, and the growth is infinite and so is the journey.

# CONTINUED....

## 15 DIMENSIONAL STRUCTURE

(These dimensions or planets are connected to our Milky Way star system)

Dimension 1 - Parallel Earth - Mercury

Dimension 2 - Inner Earth - Epsilon

Dimension 3 - Earth - Venus

Dimension 4 - Sun - Mars

Dimension 5 - Tara - Asteroid Belt

Dimension 6 - Sirius B - Jupiter

Dimension 7 - Acturus - Omega Centauri

Dimension 8 - Gaia - Orion

Dimension 9 - Andromeda - Neptune

Dimension 10 Lyra Vega - Nibiru

Dimension 11 - Lyra Aveyon - Pluto

Dimension 12 - Lyra Aramatena - The Great Central Sun

Dimension 13 - Divine Mother

Dimension 14 - Krystal Star / Christos/Christ Consciousness

Dimension 15 - Divine Father

# CONTINUED....

## WHAT IS A DIMENSION?

- A dimension represents a full frequency band i.e it takes the form sets of 15 - Dimensional Patterns.
- The 15 Dimensions are grouped in a sets of 3-dimesnional reality field, and this makes a Universal Template or 5 Harmonic Universes.
- Each dimension of frequency is composed of 12 sub - frequency bands, which exist as part of the longer cycle of Full Dimensional Frequency Band(this means you exist 12 times in each dimension, i.e. multi-dimensional realities/personalities)

# WHY ARE WE ON THE JOURNEY?

- To fulfill our evolutionary blueprint after regression caused by interbreeding with other animal life force.
- To chosen possess a code of transmutation and every human carry this code, and not all who carry the code will have the ability to activate it.
- We are in the journey because :
  - before you were born, as a floating energy - you sat down with your guides and your spiritual master to plan your life with thousands of possibilities.
  - you chose the experience you came to have on this earth plane
  - you chose your personality, meaning the time of your birth, so that your star sign can align with you
  - you chose your parents
  - you chose your name
  - you chose your life lessons
  - you chose what karmic debt are you here to repay
  - you chose the time will spiritually awaken without the help of any spirit.
- We are in this journey to reassemble our DNA structure to restore our original human template and be one with the Source.
- To restore our connection to the galaxies just how we were created.

# HOW ARE ANCESTORS CONNECTED TO US?

## **They are connected to us through:**

- Chakras - energy centers in the body and outside the body
- Energy/Subtle Bodies - the boundary between the physical and spiritual realms
- Aura - the energy field that surrounds your body
- Meridian Lines - Energy pathways
- Spiritual DNA Template 12 strands - it contains information about the trajectory of our soul, describing how we have become who we are.
- Earth Chakars - physical locations super charged with energy that keeps the planet and all life on its balance.

# 12 SOUL MISSIONS

## **You might be one of these souls in this earth plane:**

1. **Grid Worker** - deals with gateways to this earth and can sense dark energy in any space.
2. **Transmuter /Timeline Worker** - can change timelines.
3. **Frequency Worker** - Must maintain right frequency always
4. **Healer** - mission to heal humanity
5. **Light Keeper / Light Worker** - have special abilities to embody light
6. **Messenger** - carry messages through worlds
7. **Seer** - ability to see into the future
8. **Active Blueprint Weaver** - able to access future
9. **Manifestor** - have strong vizualization abilities to manifest anything
10. **Astral Worker** - able to do out of body experience in an advanced manner
11. **Way shower** - show by example
12. **Ascension Guide** - helps you ascend and how to navigate in the journey and its challenges



**VEESELEKA@ICLOUD.COM**

**You might need to have a look at our courses:**

**UNIVERSAL HEALER COURSE**

- Course designed for those who are called in multi-dimensional healing work in cosmic/isthunywa and idlozi/ancestral work.
- It is an online course offered in modules.
- It starts at \$9,99 up to \$150, and it is a month-to month membership.
- The course offers theoretical background of both gifts, and you have a choice of having a two months practical training.

**FOR FURTHER QUERIES YOU MAY EMAIL ME AT:**

veeseleka@icloud.com or visit: [www.drorongwa-makena.com](http://www.drorongwa-makena.com)